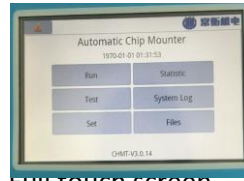


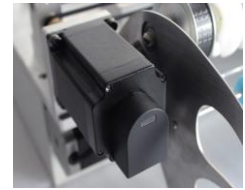


CHMT48VA PICK AND PLACE MACHINE

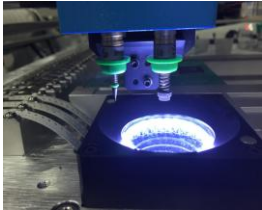
- * All-in-one machine
- * High speed mounting with double Vision system
- * Closed-loop control
- * Embedded Linux system
- * Industry high reliable mainboard
- * 29pcs feeders with 2 Placement Heads
- * High quality Juki Nozzles
- * Multi PCB assembly support



Full touch screen
No need external PC



Axis closed-loop control



Double CCD camera
Vision system



Model	CHM-T48VA
XYZ Axis travel	400mm(X)×460mm(Y)×15mm(Z)
PCB max size	10*18mm ~ 355mm(L)×355mm(W)
Support components	LED, 0402-5050, SOP, QFN etc.
Mounting speed	Without vision:6000cph; With Vision:4000cph
Precision	±0.025mm
Placement head	2 heads
Feeding system	29pcs feeders(8mm 22; 12mm 4; 16mm 2; 24mm 1); 14 bulk IC; User-defined IC tray
Demension	960mm(L)×705mm(W)×335mm(H)
Vision detection	Double camera (up & down)
Motor control	XY Axis stepper motor with encoder closed-loop control
Components leakage detection	Z Axis reset detection; Vision inspection
Main board	High-reliability industry motherboard
Touch Screen	7 inches industry LCD screen
Operation system	Embedded Linux system
Air source	in-build 2 vacuum pump
Pull pin needle auto return	Yes, to avoid pull pin broke
Support software	PADS,Kicad,Eagle,Cadint,Cadence Orcad,Cadence Allegro,PROTEUS...etc
Power supply	AC220V 50Hz / AC110V 60Hz
Power	250W
Net weight	65Kg

CHARMHIGH TECHNOLOGY LIMITED

5th floor Longshenggaoke Bd, Huangbao Rd(W), Tianxin District, Changsha, Hunan, China
Email: charmhigh@126.com ; Kimi@charmhigh-tech.com ; Mobile No: +86 135 106 75756 ; skype: kimiliu89